

LEGEND

- Indicates a stone marker.
- Indicates an Iron Pipe.
- Indicates an Iron Pin.
- Indicates a Spike.
- x— Indicates a fence line.

**PLAT OF
FIRST ADDITION
TO
RO-DA-PA ACRES SUBDIVISION**

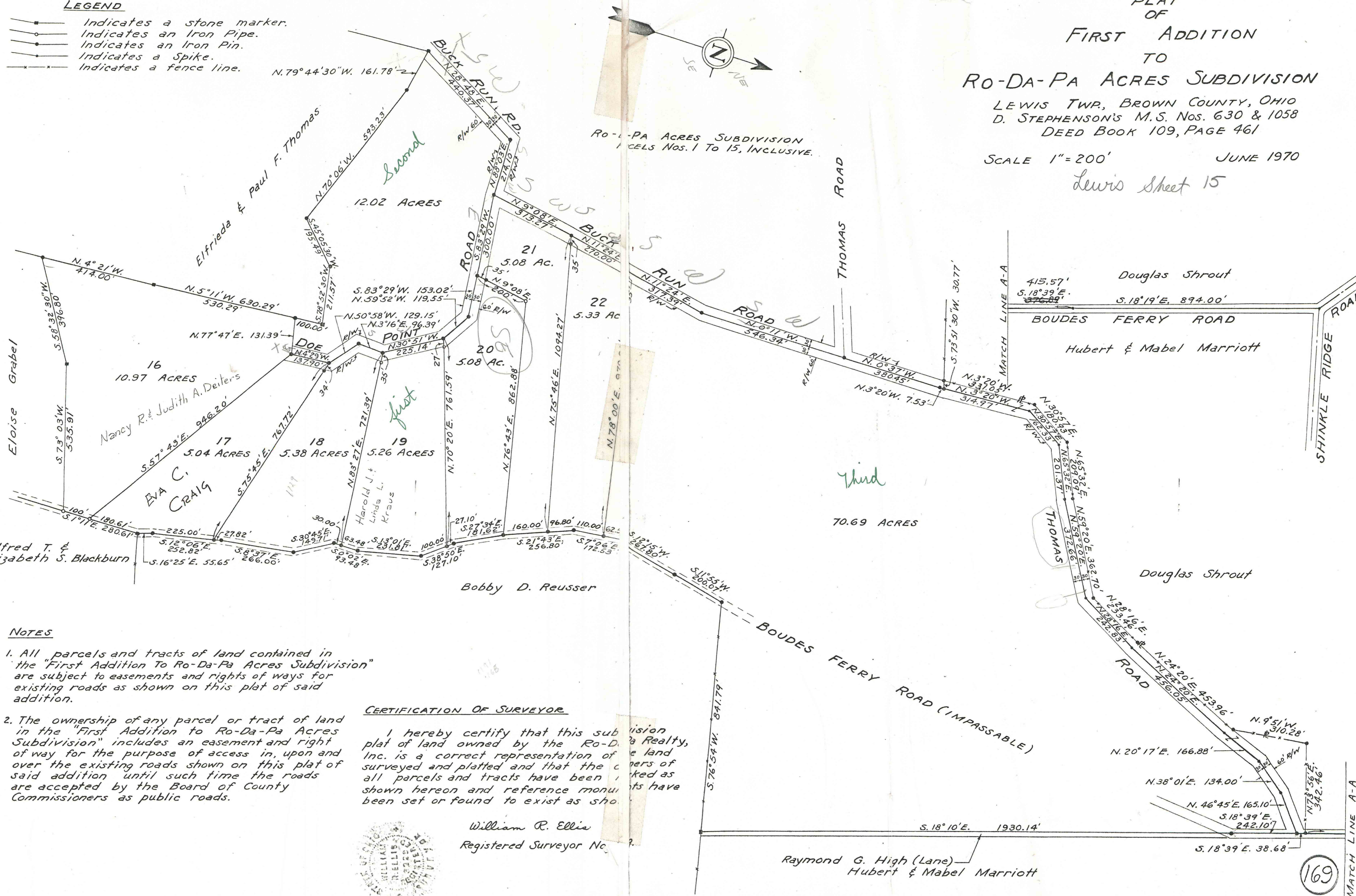
LEWIS TWP., BROWN COUNTY, OHIO
D. STEPHENSON'S M.S. Nos. 630 & 1058
DEED BOOK 109, PAGE 461

SCALE 1" = 200'

JUNE 1970

Lewis Sheet 15

RO-DA-PA ACRES SUBDIVISION
PARCELS Nos. 1 TO 15, INCLUSIVE.



- NOTES**
- All parcels and tracts of land contained in the "First Addition to Ro-Da-Pa Acres Subdivision" are subject to easements and rights of way for existing roads as shown on this plat of said addition.
 - The ownership of any parcel or tract of land in the "First Addition to Ro-Da-Pa Acres Subdivision" includes an easement and right of way for the purpose of access in, upon and over the existing roads shown on this plat of said addition until such time the roads are accepted by the Board of County Commissioners as public roads.

CERTIFICATION OF SURVEYOR

I hereby certify that this subdivision plat of land owned by the Ro-Da-Pa Realty, Inc. is a correct representation of the land surveyed and platted and that the corners of all parcels and tracts have been marked as shown hereon and reference monuments have been set or found to exist as shown.

William R. Ellis
Registered Surveyor No. 12345

